
east malling research

**Introduction to
East Malling Research**

Professor Peter J. Gregory



What does EMR do?



- Our mission is:

to conduct high-quality strategic and applied research in horticultural and environmental sciences, and to deliver knowledge, products and services that benefit public and private customers

- Our vision is:

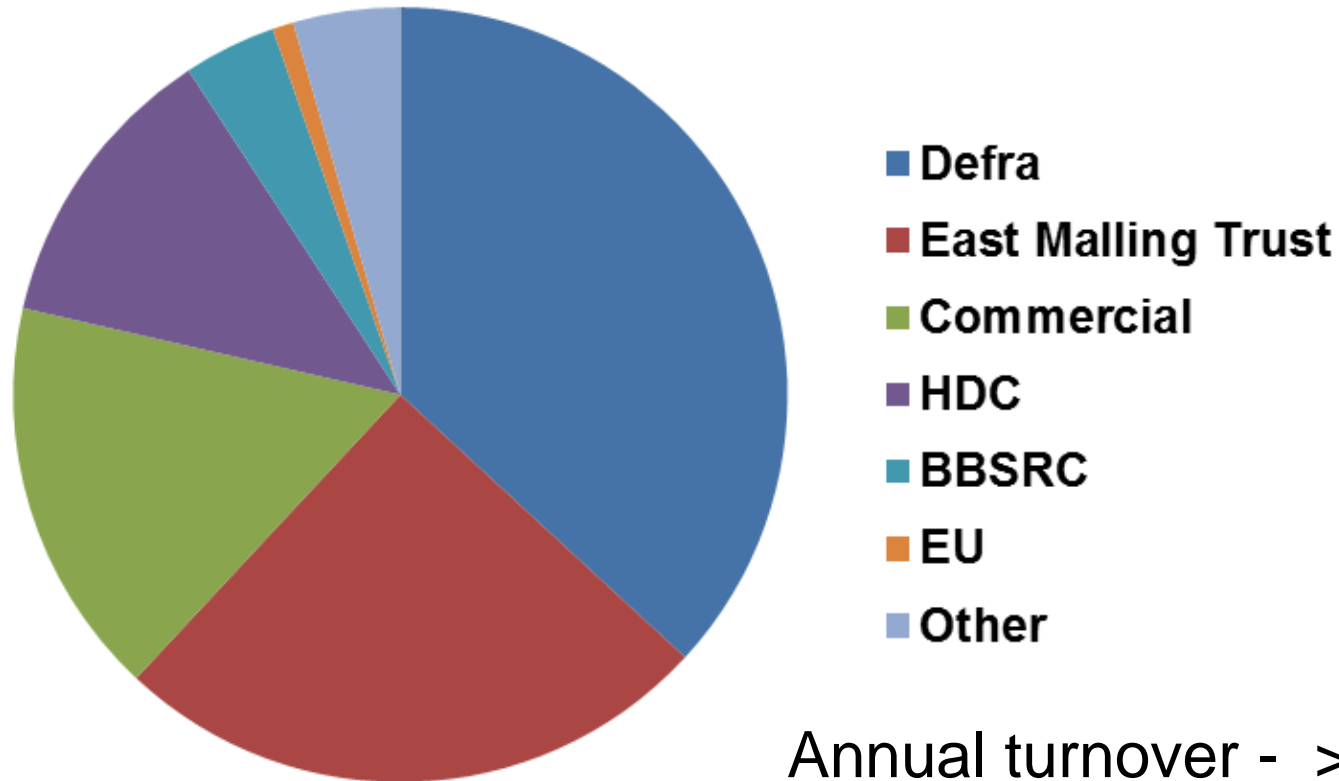
to be recognised as the pre-eminent research institute in the UK for strategic and applied research, development and innovation in horticulture with particular emphasis on perennial and clonally propagated crops

Some facts and figures



- EMR is part of the East Malling Group headed by the East Malling Trust
- We are a charity and company limited by guarantee
- We have about 45 staff and students
- Our research started in 1913 funded by subscriptions from forward-looking farmers
- At its height, East Malling had about 400 staff – second only to Rothamsted in the UK

How are we funded?



Who are our major customers?



Public sector:



Material change for a better environment

Technology Strategy Board
Driving Innovation

Commercial:



Our high level research themes



- ◆ Diploid strawberry as a model for perennial crops
 - ◆ Genetic basis of resistance and pathogenicity
 - ◆ Enhancement of soils and substrates for improved function
 - ◆ Pre- and post-harvest practices to enhance shelf-life and quality
 - ◆ Improved scientific basis of rootstock improvement
-

Genetics and Crop Improvement

Strawberry
Improvement

Molecular
genetics
of berry crops

Rootstock
genetics

Commercial
breeding
programmes





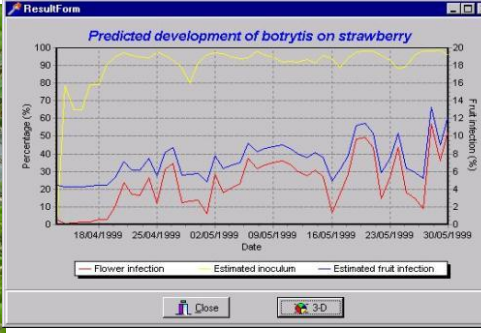
Pest and pathogen ecology and sustainable crop management

Interactions among pests, pathogens plants and control agents

Biodiversity and ecosystem services

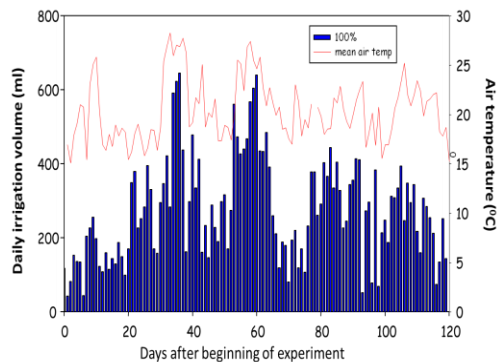
Chemical ecology of pests and predators

Modelling population dynamics

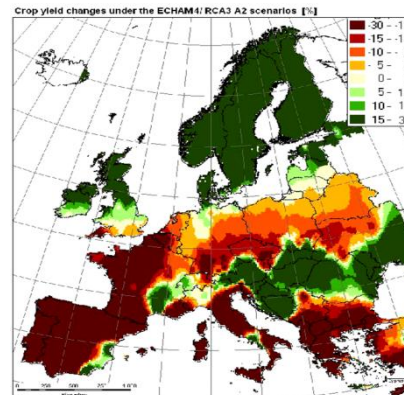


Resource efficiency for crop production

Resource use efficiency



Environmental interactions



Below ground biotic interactions



What are the major crops to which our research is applied?



- Perennial fruits (apple, pear, cherry, plum, strawberry, raspberry, blackcurrant)
- Perennial trees and non-food products (agroforestry, biomass, plant factories, nursery stock)
- Other horticultural crops (mushrooms, field vegetables, potatoes, garden plants)



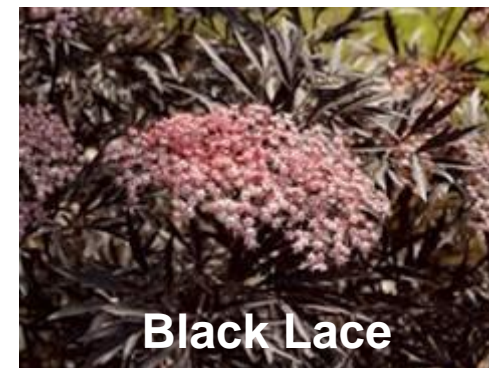
Products



Evapometer



Elegance



Black Lace



Valentina



Meridian



Anniversary



EMH

Best practice guides

